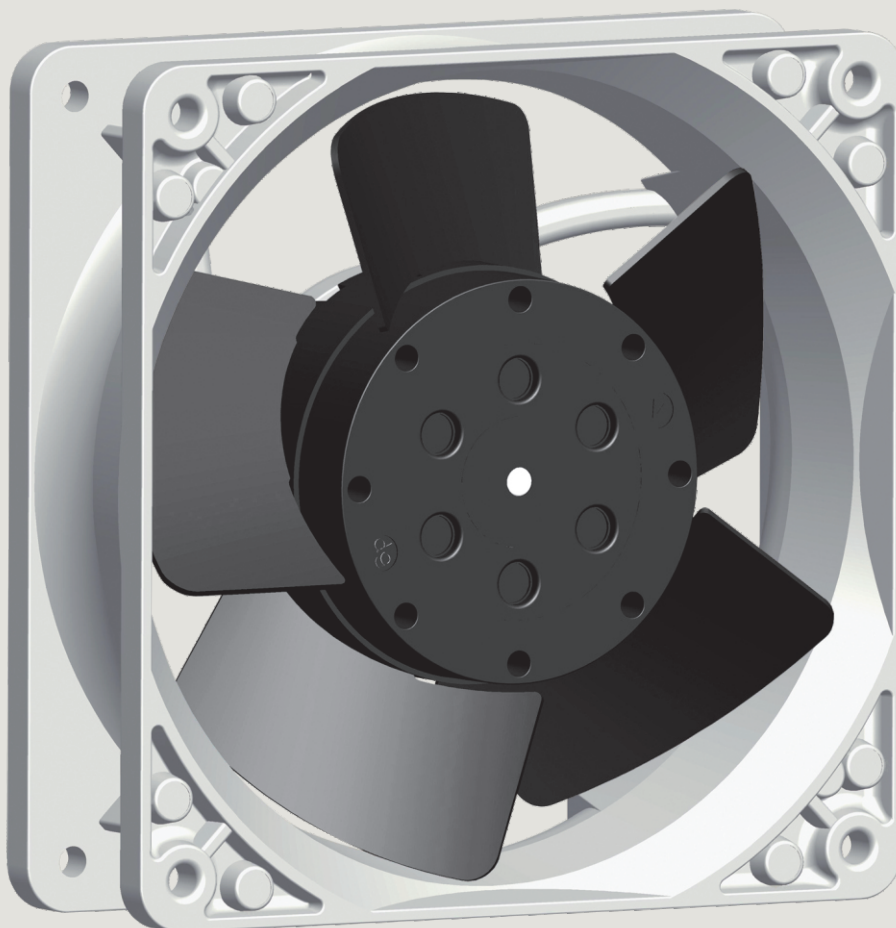
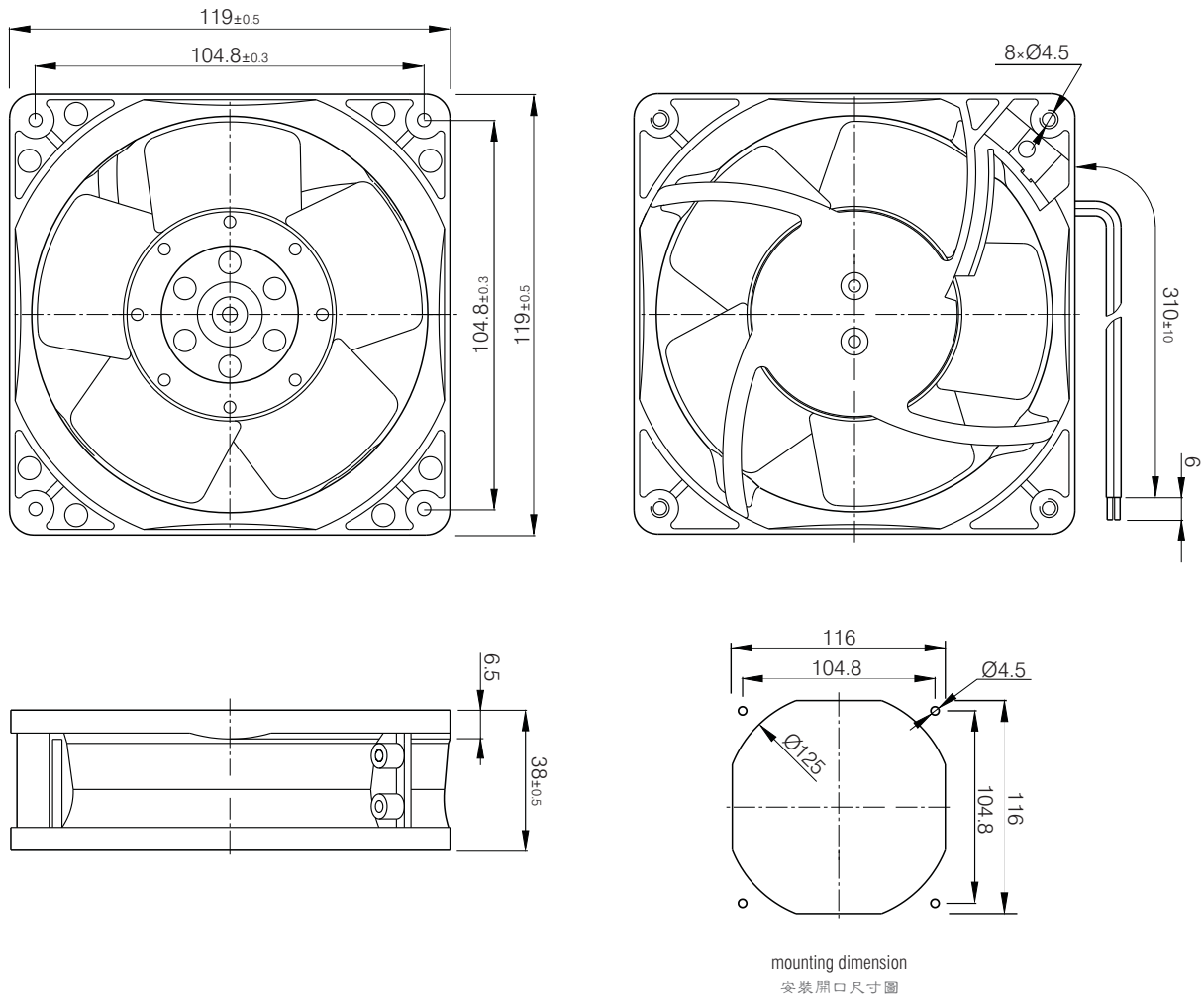


Shaded Pole
External Rotor
Motor Fan **120mm**
罩極外轉子電機風扇



- ① Frame
Aluminum die-casting, surface is finished by anti-corrosion treatment with primary color or black electrophoresis anti-corrosion treatment
- ② Impeller
Metal impellers are welded to motor rotor, and surface is finished by black electrophoresis anti-corrosion treatment
- ③ Operation Temperature/Humidity
Temperature $-30^{\circ}\text{C} \sim +65^{\circ}\text{C}$ Humidity 0% ~ 95%
- ④ Protection
Motor Internal with automatic recovery thermal protector
- ⑤ Withstand Voltage
AC 1,800V , 1 min at 0.5mA, 50/60 Hz
- ⑥ Insulation System
design according to IEC61858 Grade F,
- ⑦ Protection Grade IP33

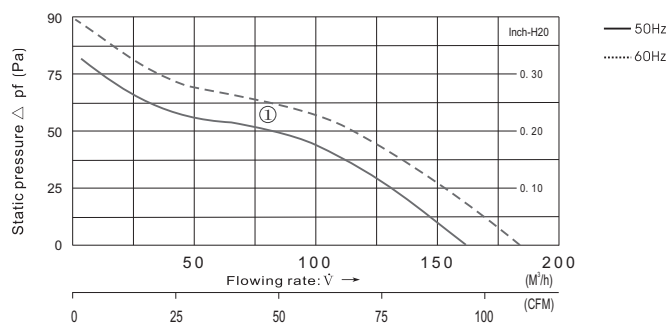
- ① 機 架:
鋁合金壓鑄, 表面原色抗腐蝕處理或黑色電泳防腐蝕處理
- ② 風 葉:
金屬葉片焊接在外轉子上, 表面黑色電泳防腐蝕處理
- ③ 運行溫/濕度範圍:
溫度 $-30^{\circ}\text{C} \sim +65^{\circ}\text{C}$ 濕度 0% ~ 95% (非凝結狀態)
- ④ 保 護:
電機內部帶自動恢復熱保護器
- ⑤ 絕緣耐壓:
AC 1800V 0.5mA 50/60Hz下耐受1分鐘
- ⑥ 絕緣系統:
按 IEC61858 F級設計
- ⑦ 電機防護等級:
IP 33



Outline Dimensions (Units:mm)

- Ⓐ Rotation direction of blades : CW seen from the front impellers
- Ⓑ Power Connection: UL3266-18 Lead wire
- Ⓒ Unit weight: 540kg

- Ⓐ 風扇旋向：從扇葉方向看為順時針
- Ⓑ 電源連接：UL3266-18 引線連接
- Ⓒ 單機重量：540g



Parameters

Type 產品型號	Motor 電機	Rated Voltage 額定電壓 V	Frequency 周波數 Hz	current 電流 (A)	Power 功率 (W) ^{+10% -20%}	Speed 回轉速度 (min^{-1})	Max Air Flow 最大風量 CFM m^3/h	Static Pressure 最大靜壓 (Pa)	Noise 噪音 (dB)	Curve 曲綫	Capacitor 電容 (μF)
FJ12031MAB	M2S5801-AB	115	50	0.27	22	2600	94.4 160	80	46	①	-----
			60	0.25	22	2900	106 180	90	50		
FJ12032MAB	M2E5801-AB	230	50	0.15	23	2600	94.4 160	80	46	①	-----
			60	0.14	22	2900	106 180	90	50		